

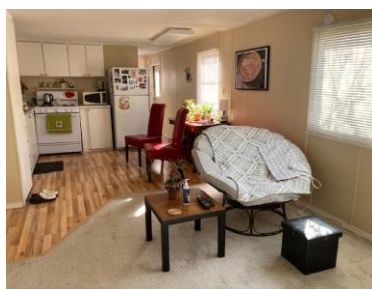
2635 Mapleton Avenue, Lot #84

Boulder, CO 80304



**\$68,000**  
(or best offer)

- *This is an affordable home*
- *Applicants must income and asset qualify through Thistle*
- *This home is 40%-50% AMI*
- *2 bedrooms, 1 bathroom*
- *700 square feet*
- *New paint, floors, carpet*
- *New toilet and sink with cabinets.*
- *Washer and dryer*
- *Roof redone*
- *Covered outside porch area*
- *Shed*
- *Flagstone patio*
- *Outside safety handrail*
- *Very nice and private*
- *Contact Rachel Folger, 720-375-1255 for more info about the home; or contact Stephanie Gittes, 720-218-1114 for further information*



This is an affordable home, buyers must income and asset qualify before making an offer. Please contact Thistle with questions regarding the application process.

**Thistle Community Land Trust**

**303-728-9354**

**[thistle.us/community-land-trust/](http://thistle.us/community-land-trust/)**



**THISTLE**