

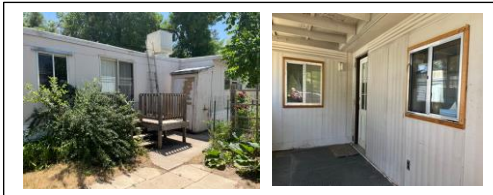
2635 Mapleton Ave. Lot # 91

Boulder, Colorado 80304-3826



\$25,000

- *Make it your own! This sold "as-is" home has 2 bedrooms and 1 bathroom.*
- *The home has much of the original 1957-1961 charm.*
- *The carpet has been removed and can be replaced with a flooring of your choice.*
- *Legal Description: 91 Mapleton MHP 61 Marlette 52X10.*
- *A home inspection has been completed and the report is available.*
- ***This home is 30% - 40% AMI and applicants must income and asset qualify through Thistle (see below).***
- *The home offers a large covered front porch and a deck off the sliding glass door to the back patio area. The property also has a fenced in garden area and two storage sheds.*
- *The Mapleton Mobile Home Park is conveniently located near shopping.*



This home is in an affordable housing Boulder County program. Buyers must income and asset qualify before making an offer. Please contact Thistle with questions regarding the application process.

Thistle Community Land Trust

303-728-9354

thistle.us/community-land-trust/

Sellers Contact Information-Elizabeth Wilson at 303-243-8203 or

Gregor Wilson at 303-717-6379



THISTLE