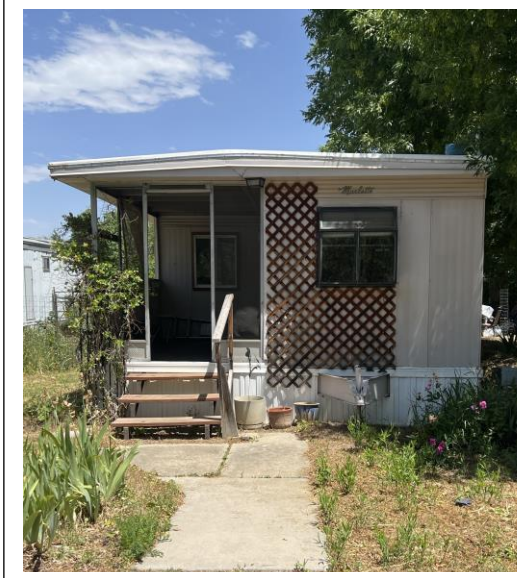


2635 Mapleton Ave. Lot # 91

Boulder, Colorado 80304-3826



\$50,000

- *Make it your own! This sold "as-is" home has 2 bedrooms and 1 bathroom.*
- *The home has much of the original 1957-1961 charm.*
- *Legal Description: 91 Mapleton MHP 61 Marlette 52X10.*
- *A home inspection has been completed and the report is available.*
- *This home is 30% AMI and applicants must income and asset qualify through Thistle.*
- *The home offers a large covered front porch and a deck off the sliding glass door to the back patio area. The property also has a fenced in garden area and two storage sheds.*
- *The Mapleton Mobile Home Park is conveniently located near shopping.*



Sellers Contact Information-Elizabeth Wilson at 303-243-8203 or Gregor Wilson at 303-717-6379

This is an affordable home, buyers must income and asset qualify before making an offer. Please contact Thistle with questions regarding the application process.

Thistle Community Land Trust

303-728-9354

thistle.us/community-land-trust/



THISTLE